

Floor Plans and Room Specifications  
One Great George Street



02	Introduction
03	Room Capacities
04	Telford Theatre
05	Great Hall
06	Smeaton Room
07	Brunel Room
08	Council Room
09	Stephenson Room
10	Godfrey Mitchell Theatre
11	Palmer Room
12	Rennie Room
13	Tredgold Room
14	President's Dining Room
15	Bazalgette Room
16	Small Meeting Rooms
18	Notes
20	Location Map

## Introduction

One Great George Street offers impressive surroundings, whether you're planning a conference, client party, gala dinner, seminar or a small meeting. Outlined is our range of business, lecture theatre, entertainment and dining facilities together with details of all the specifications you may need.

Many of our larger rooms have elegant crystal chandeliers, French walnut or oak panelling and fine works of art. These can be used for a variety of events and are also recommended for lunches, dinners and receptions. We also have an extensive range of smaller and more modern rooms which are ideal for meetings, break out rooms and informal dining. For presentations, conferences and lectures, we have two theatres, the Telford and Godfrey Mitchell. These are permanently equipped with the latest in modern technology and theatre hire includes the services of a dedicated technician to ensure smooth delivery. The layout of all of our rooms can be adapted to suit your needs and a wide range of audio visual equipment, lighting and experienced technicians can be hired for any room.

You'll find us extremely flexible, whatever the size of your event. For further information, or if you have a special request, please call +44 (0)20 7665 2323 or email us at [info@onegreatgeorgestreet.com](mailto:info@onegreatgeorgestreet.com)

## Room Capacities

Room	Theatre Style	Boardroom Style	Classroom Style	Standing Buffet/ Beverages	Seated Buffet	Seated Lunch/Dinner/ Cabaret*
Smeaton Room	150	60	60	150	90	100
Brunel Room	100	48	45	100	70	80
Council Room	100	48	45	100	70	80
Stephenson Room	30	26	12	30	20	30
Godfrey/Mitchell Theatre	106	–	–	–	–	–
Telford Theatre	240	–	–	–	–	–
Great Hall	400	–	135	400	253	260
Palmer Room	70	36	30	70	40	40
Rennie Room	70	36	42	100	50	50
				80 for buffet		
Tredgold Room	36	22	18	30	20	22 <sup>2</sup>
President's Dining Room	–	18	–	30	20	22 <sup>1</sup>
Bazalgette Room	30	26	15	30	20	26 <sup>1</sup>
Cubitt Room	16	16	8	20	16	16 <sup>1</sup>
Hawksley Room	12	12	6	15	12	12 <sup>1</sup>
McKenzie Room	12	12	6	15	12	12 <sup>1</sup>
Hawksley and McKenzie Rooms (Combined)	30	24	20	30	24	24 <sup>1</sup>
Rankine Room	16	16	8	20	16	16 <sup>1</sup>
Brassey Room	24	20	12	25	20	20 <sup>1</sup>
Bruce White Room	16	16	8	20	16	16 <sup>1</sup>
Bailey Room	6	6	–	–	–	–

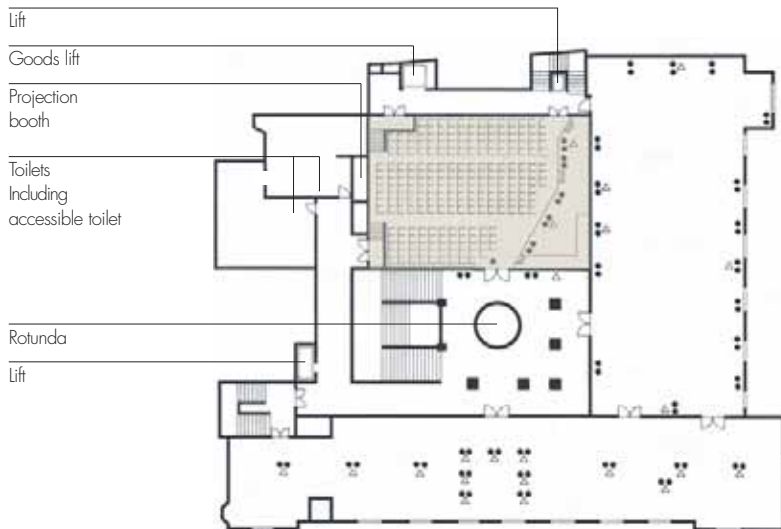
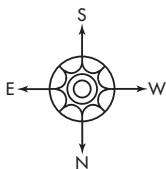
\* Based on 6' rounds of 10. Some people will have backs to the screen

<sup>1</sup> Cabaret style not available

<sup>2</sup> 20 in cabaret style

# Telford Theatre

## First Floor



### Key

- △ Telephone point
- 13 amp socket

Room hire includes the services of a technician and all standard audio visual equipment already installed as shown.

Dimensions	
Length	18.01m
Width	11.91m
Height	7.80m max
Area	214.50 sq m

Capacities	
Theatre style	240

Equipment Included as Standard	
Data/video projector	
VHS (PAL) and DVD player	
PA system	
Visualiser	
Hard of hearing induction loop	
PC	
Two hand held radio microphones	
One radio lapel microphone	
Cassette player/recorder	
MP3 player/recorder	
Top table to seat 7 with plasma screens	
Lectern with plasma screen	

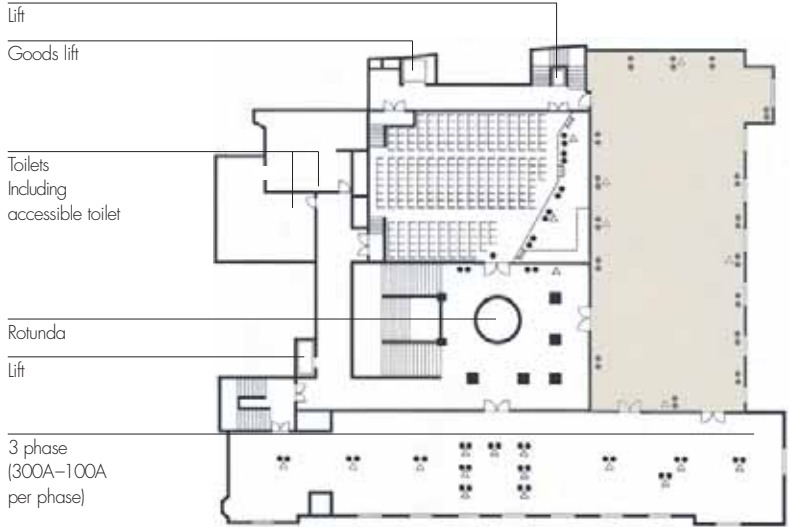
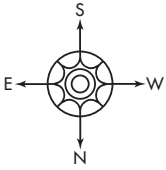
Lighting	
Stage lighting for podium and top table	
Fixed downlights	22
Light switches in room and projection booth	Yes
Dimmers	Yes

Power and Communications	
Number of 13 amp sockets	15
Telephone points	Yes
Wireless and wired broadband internet access	Yes
ISDN	Yes

Main Access	
Double doors	
Door width	2m
Door height	3.35m

# Great Hall

First Floor



## Key

- △ Telephone point
- 13 amp socket

Dimensions	
Length	29.57m
Width	13.34m
Height	13.50m
Height under chandelier	4.80m
Area	394.46 sq m

Lighting (Natural Daylight)	
Wall lights	
Fluorescent batten mounted at high level	
Chandeliers	2
Light switch in room	Yes
Dimmers	Yes

Capacities	
Theatre style	400
Classroom style	135
Stand up buffet/reception	400
Seated lunch/dinner/cabaret*	260
Dinner/dance	220
Seated buffet	253

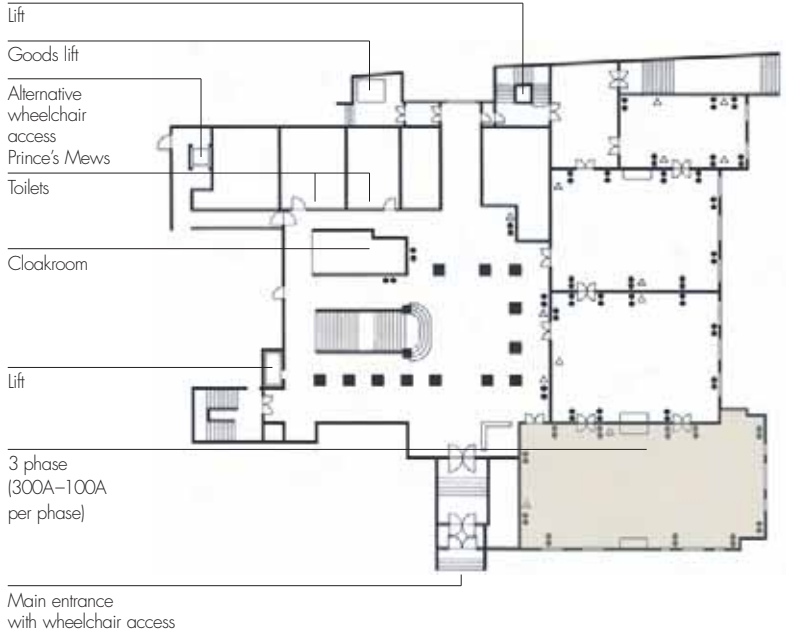
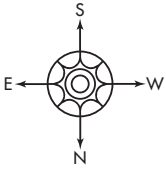
Power and Communications	
Number of 13 amp sockets	32
(4 x 32A ring mains)	
3 phase (300A-100A per phase)	
Telephone points	Yes
Wireless broadband internet access	Yes
ISDN	On request

Main Access	
Door width	2m
Door height	3.35m

\* Based on 6' rounds of 10  
In cabaret style some people will have backs to the screen

# Smeaton Room

Ground Floor



## Key

- △ Telephone point
- 13 amp socket

Dimensions	
Length	20.42m
Width	8.46m
Height	4.82m
Height under chandelier	2.68m
Area	172.75 sq m

Capacities	
Boardroom style	60
Theatre style	150
Classroom style	60
Stand up buffet/reception/cabaret*	150
Seated lunch/dinner	100
Seated buffet	90

Lighting (Natural Daylight)	
Chandeliers	1
Fixed downlights	49
light switch in room	Yes
Dimmers	Yes

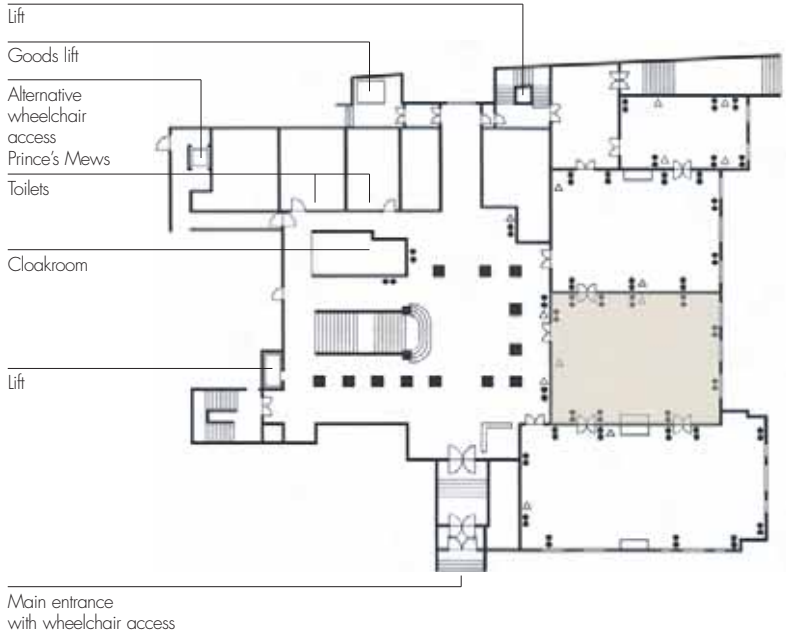
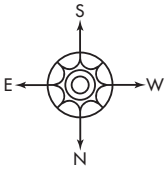
Power and Communications	
Number of 13 amp sockets	22
3 phase (300A-100A per phase)	
Telephone points	Yes
Wireless and wired broadband internet access	Yes
ISDN	Yes

Main Access	
Door width	1.50m
Door height	2.44m

\* Based on 6' rounds of 10  
In cabaret style some people will have backs to the screen

# Brunel Room

Ground Floor



## Key

- △ Telephone point
- 13 amp socket

Dimensions	
Length	13.28m
Width	10.26m
Height	4.82m
Height under chandelier	2.68m
Area	136.25 sq m

Capacities	
Boardroom style	48
Theatre style	100
Classroom style	45
Stand up buffet/reception/cabaret*	100
Seated lunch/dinner	80
Seated buffet	70

Lighting (Natural Daylight)	
Chandeliers	1
Fixed downlights	28
light switch in room	Yes
Dimmers	Yes

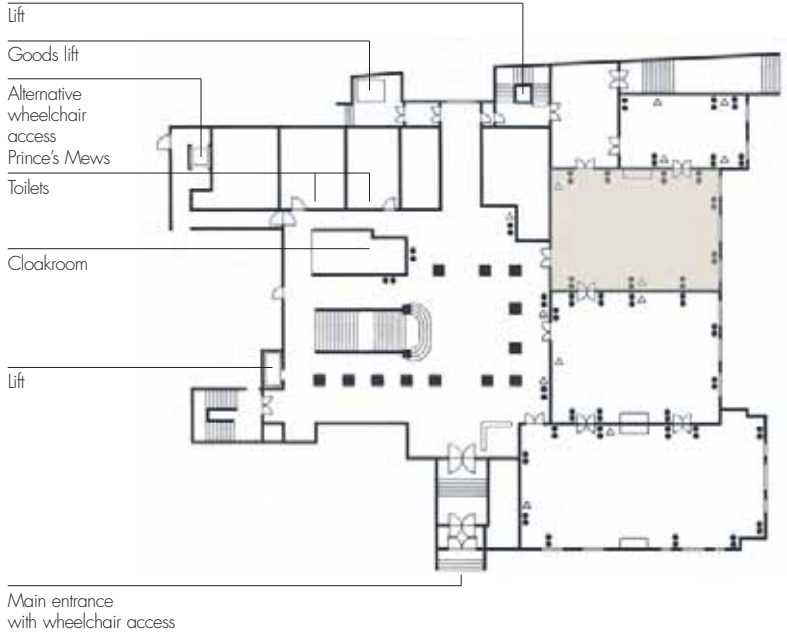
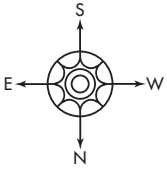
Power and Communications	
Number of 13 amp sockets	20
Telephone points	Yes
Wireless and wired broadband internet access	Yes
ISDN	Yes

Main Access	
Door width	1.50m
Door height	2.44m

\* Based on 6' rounds of 10  
In cabaret style some people will have backs to the screen

# Council Room

Ground Floor



- Key**  
 △ Telephone point  
 ● 13 amp socket

Dimensions	
Length	13.28m
Width	9.65m
Height	4.82m
Height under chandelier	2.68m
Area	128.15 sq m

Capacities	
Boardroom style	48
Theatre style	100
Classroom style	45
Stand up buffet/reception/cabaret*	100
Seated lunch/dinner	80
Seated buffet	70

Lighting (Natural Daylight)	
Chandeliers	1
Fixed downlights	30
light switch in room	Yes
Dimmers	Yes

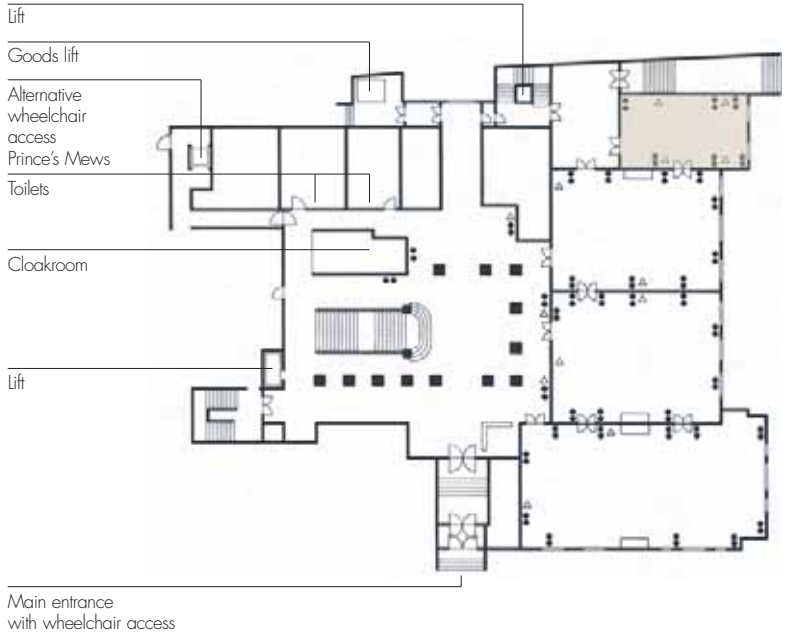
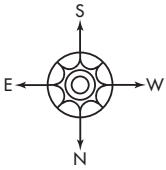
Power and Communications	
Number of 13 amp sockets	18
Telephone points	Yes
Wireless and wired broadband internet access	Yes
ISDN	Yes

Main Access	
Door width	1.50m
Door height	2.44m

\* Based on 6' rounds of 10  
 In cabaret style some people will have backs to the screen

# Stephenson Room

Ground Floor



## Key

- △ Telephone point
- 13 amp socket

Dimensions	
Length	10.30m
Width	6m
Height	4.82m
Height under chandelier	2.68m
Area	61.80 sq m

Capacities	
Boardroom style	26
Theatre style	30
Classroom style	12
Stand up buffet/reception	30
Seated lunch/dinner/cabaret*	30
Seated buffet	20

Lighting (Natural Daylight)	
Picture lights	8
Chandeliers	1
light switch in room	Yes
Dimmers	Yes

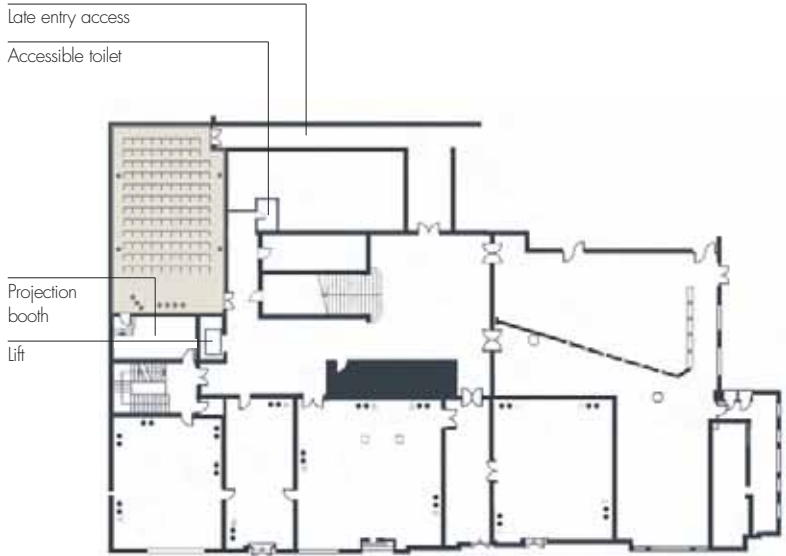
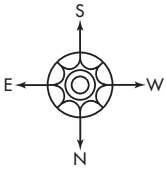
Power and Communications	
Number of 13 amp sockets	12
Telephone points	Yes
Wireless broadband internet access	Yes
ISDN	Yes

Main Access	
Door width	1.50m
Door height	2.44m

\* Based on 6' rounds of 10  
In cabaret style some people will have backs to the screen

# Godfrey Mitchell Theatre

Lower Ground Floor



## Key

- △ Telephone point
- 13 amp socket

Room hire includes the services of a technician and all standard audio visual equipment already installed as shown.

Dimensions	
Length	14.60m
Width	7.70m
Height	3.25m
Area	112.42 sq m

Capacities	
Theatre style	106

Equipment Included as Standard	
Data/video projector	
PA system	
VHS (PAL) and DVD player	
PC	
Visualiser	
Two hand held radio microphones	
One radio lapel microphone	
Cassette player/recorder	
MP3 player/recorder	
Top table to seat 4 with plasma screens (removable)	
Lectern with plasma screen (removable)	
Hard of hearing induction loop	

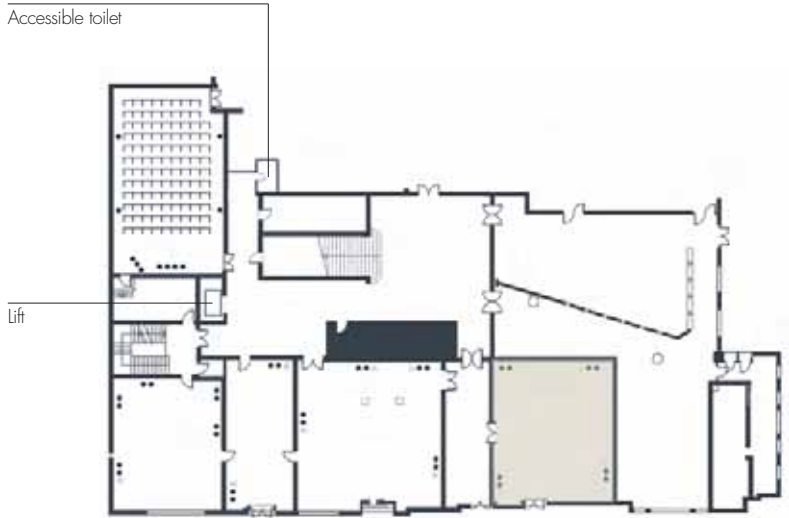
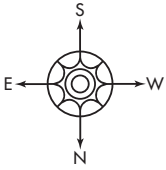
Lighting	
Fixed downlights	71
Light controls in room and projection booth	Yes
Dimmers	Yes

Power and Communications	
Number of 13 amp sockets	11
Telephone point	Yes
Wireless and wired broadband internet access	Yes
ISDN	Yes

Main Access	
Door width	1.30m
Door height	2.23m

# Palmer Room

Lower Ground Floor



## Key

- △ Telephone point
- 13 amp socket

Dimensions		Lighting (Natural Daylight)	
Length	10m	Fixed downlights	
Width	8.90m	Dimmers	Yes
Height	2.50m		
Area	89 sq m	Power and Communications	
		Number of 13 amp sockets	4
		Telephone points	Yes
		Wireless and wired broadband internet access	Yes
		ISDN	Yes
		Main Access	
		Double doors	
		Door width	1.55m
		Door height	2.10m

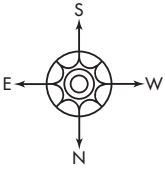
## Equipment Included as Standard

Projection screen

\* Based on 6' rounds of 10  
In cabaret style some people will have backs to the screen

# Rennie Room

Lower Ground Floor



Accessible toilet

Lift



## Key

- △ Telephone point
- 13 amp socket

## Dimensions

Length	10m
Width	10m
Height	2.50m
Area	100 sq m

## Capacities

Boardroom	36
Theatre style	70
Classroom style	42
Stand up buffet/reception	80/100
Seated lunch/dinner/cabaret*	50
Seated buffet	50

## Lighting (Natural Daylight)

Fixed downlights	
Dimmers	Yes

## Power and Communications

Number of 13 amp sockets	4
Telephone points	Yes
Wireless and wired broadband internet access	Yes
ISDN	Yes

## Main Access

	Double doors
Door width	1.55m
Door height	2.10m

## Equipment Included as Standard

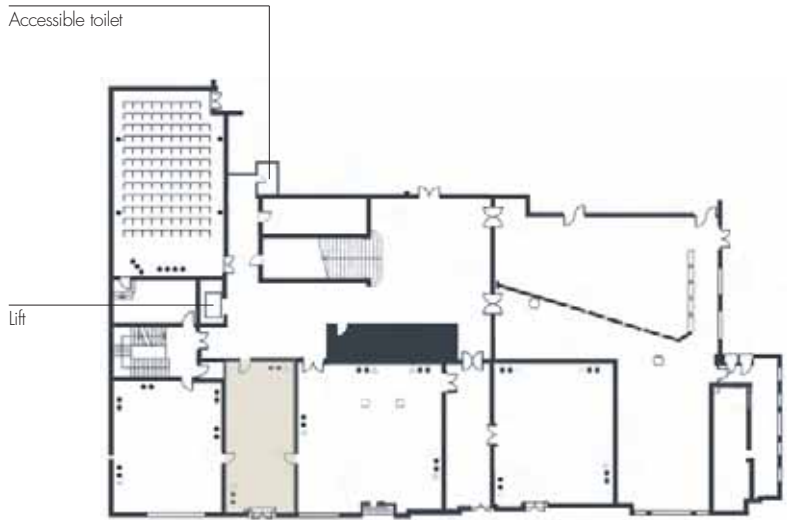
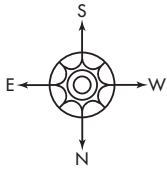
Projection screen

\* Based on 6' rounds of 10

In cabaret style some people will have backs to the screen

# Tredgold Room

Lower Ground Floor



## Key

- △ Telephone point
- 13 amp socket

Dimensions		Lighting (Natural Daylight)	
Length	10m	Fixed downlights	
Width	4.5m	Dimmers	Yes
Height	2.6m		
Area	45 sq m	Power and Communications	
		Number of 13 amp sockets	2
		Telephone points	Yes
		Wireless broadband internet access	Yes
		ISDN	Yes
		Main Access	
		Door width	1m
		Door height	2.1m

## Equipment Included as Standard

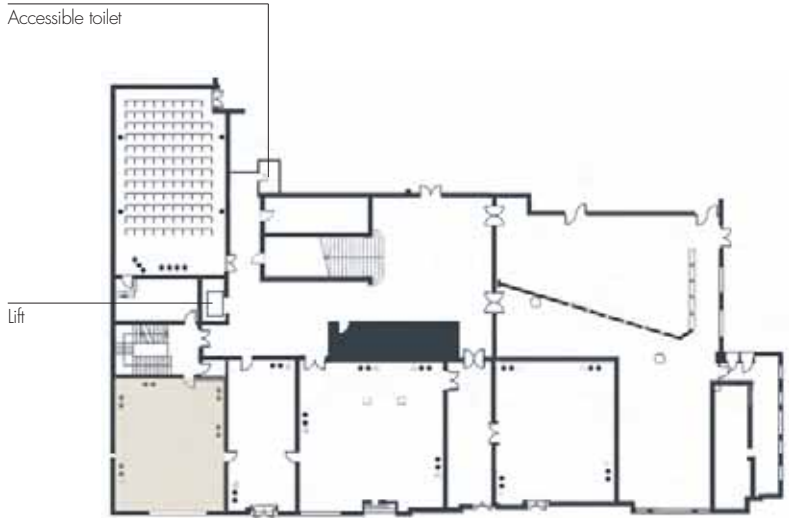
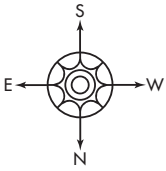
Projection screen

\* Based on 6' rounds of 10

In cabaret style some people will have backs to the screen

# President's Dining Room

Lower Ground Floor



## Key

- △ Telephone point
- 13 amp socket

Dimensions	
Length	8.30m
Width	7.70m
Height	3.20m
Area	63.90 sq m

Capacities	
Boardroom	18
Stand up buffet/reception	30
Seated lunch/dinner	18
Seated Buffet	18

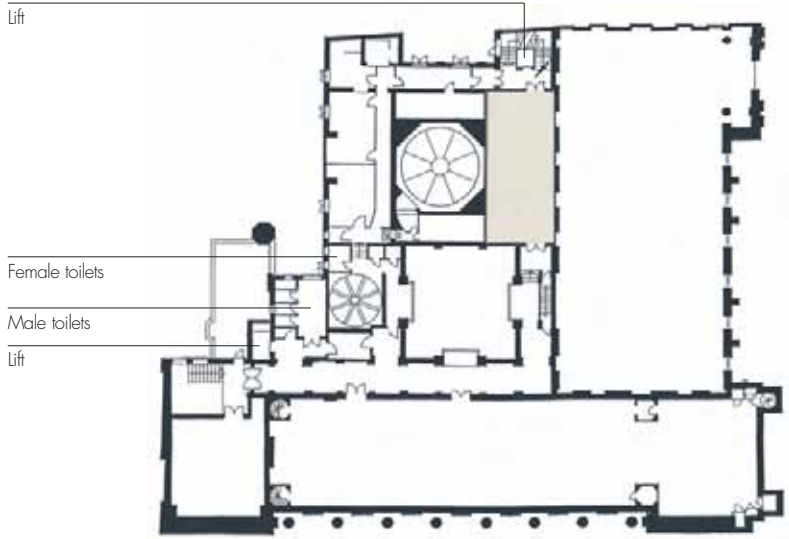
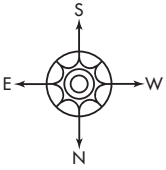
Lighting (Natural Daylight)	
Fixed downlights and table/standard lamps	

Power and Communications	
13 amp sockets	Yes
Telephone points	Yes
Wireless broadband internet access	Yes

Main Access	
Door width	0.86m
Door height	2.20m

# Bazalgette Room

Second Floor



- Key**  
 △ Telephone point  
 ● 13 amp socket

Dimensions	
Length	12m
Width	4.10m
Height	3.60m
Area	49.20 sq m

Capacities	
Boardroom style	26
Theatre style	30
Classroom style	15
Stand up buffet/reception	30
Seated lunch/dinner	26
Seated buffet	20

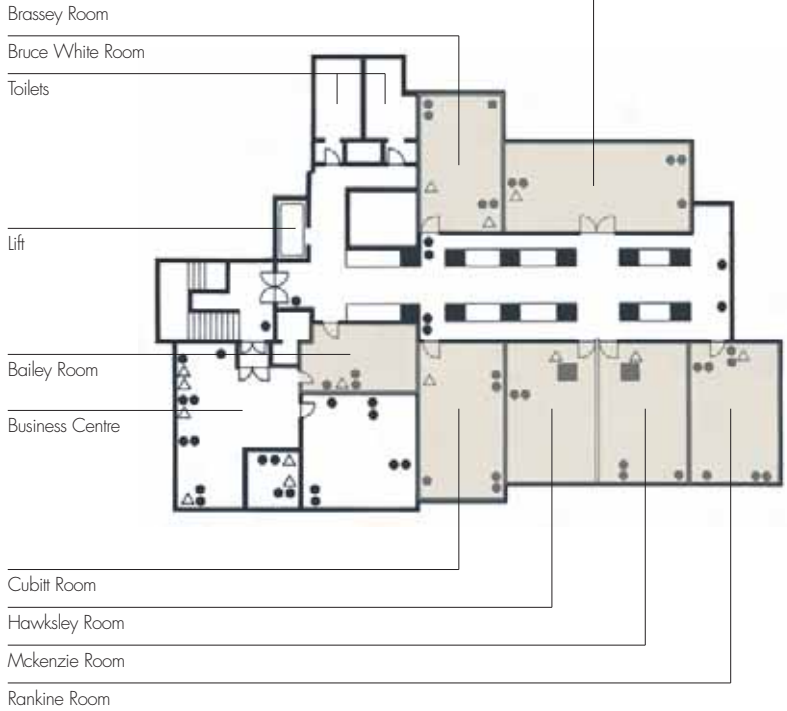
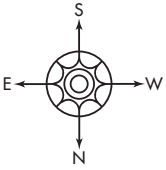
Lighting (Natural Daylight)	
Pendant lighting	
Dimmers	No

Power and Communications	
Number of 13 amp sockets	5
Telephone points	Yes
Wireless and wired broadband internet access	Yes
ISDN	On request

Main Access	
Door width	1.40m
Door height	2.20m

# Small Meeting Rooms

Lower Ground Floor Two



Dimensions	Mckenzie and Hawksley							
	Cubitt Room	Hawksley Room	Mckenzie Room	Rooms (Combined)	Rankine Room	Brassey Room	Bruce White Room	Bailey Room
Length	8.20m	7.30m	7.30m	–	7.30m	8.60m	7.30m	5.70m
Width	4.30m	4.30m	4.30m	–	4.50m	4.70m	4.30m	3.35m
Height	2.30m	2.30m	2.30m	–	2.30m	2.30m	2.30m	2.20m
Area	35.26m	31.39m	31.39m	62.78m	32.85m	40.42m	31.39m	19.10m

#### Capacities

Boardroom style	16	12	12	24	16	20	16	6
Theatre style	16	12	12	30	16	24	16	6
Classroom style	8	6	6	20	8	16	12	–
Stand up buffet/ reception	20	20	20	30	20	25	16	–
Seated lunch/dinner	16	12	12	24	16	20	16	–
Seated buffet	16	12	12	24	16	20	16	–

#### Lighting

Fixed downlights	11	17	17	–	11	16	11	6
Dimmers	Yes	Yes	Yes	–	Yes	Yes	Yes	Yes

#### Power

Number of 13 amp sockets	5	2	3	–	3	5	5	2
-----------------------------	---	---	---	---	---	---	---	---

#### Communications

Telephone	Yes	Yes	Yes	–	Yes	Yes	Yes	Yes
Cat 5 cabling	Yes	Yes	Yes	–	Yes	Yes	Yes	Yes
Wireless broadband internet access	Yes	Yes	Yes	–	Yes	Yes	Yes	Yes
ISDN	On request	On request	On request	–	On request	On request	On request	On request

#### Main Access

Door width	0.80m	0.80m	0.80m	–	0.80m	1.70m	0.80m	0.80m
Door height	2.22m	2.22m	2.22m	–	2.22m	2.22m	2.22m	2.15m

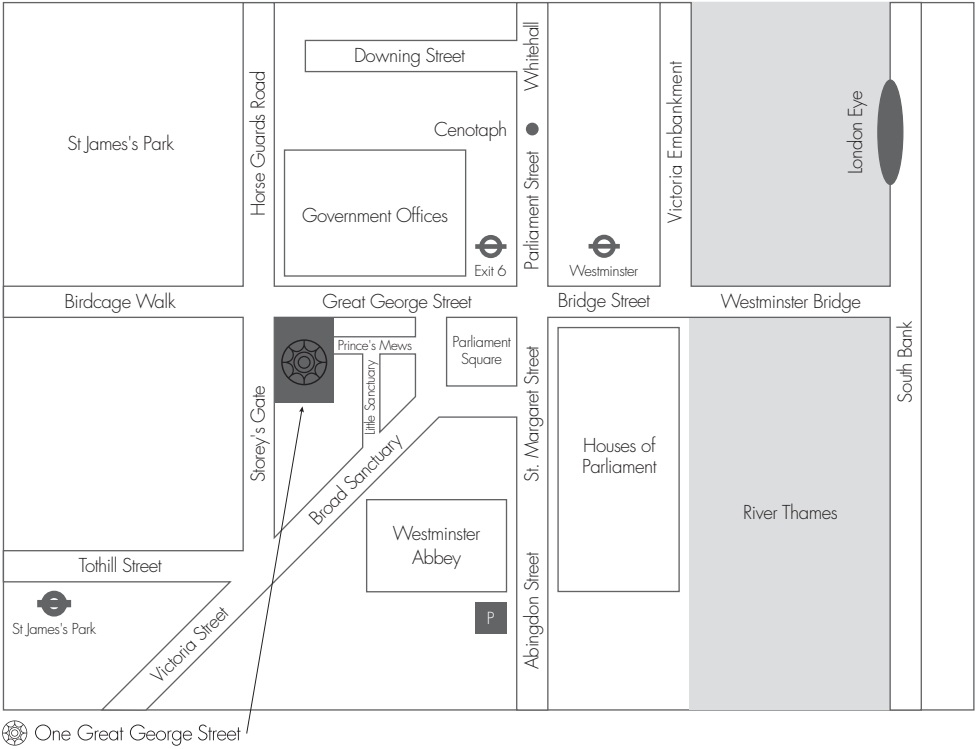
#### Equipment

Projection screen	Yes	Yes	Yes	Yes	Yes	Yes	Yes	Yes
-------------------	-----	-----	-----	-----	-----	-----	-----	-----

# Notes



# Location Map





One Great George Street  
Westminster, London SW1P 3AA  
Telephone +44 (0)20 7665 2323  
Facsimile +44 (0)20 7976 0697  
Email [info@onegreatgeorgestreet.com](mailto:info@onegreatgeorgestreet.com)  
[www.onegreatgeorgestreet.com](http://www.onegreatgeorgestreet.com)