



Accessible meeting rooms at One Great George Street

Introduction

This document should be read along with our Accessibility Statement which can be downloaded from our website. Our aim is to provide you with extra information about each room and what it looks like so it is easier for you to recognise. However, our staff are very willing to escort you to your destination. There are four floors at the venue and we will start at the top and work our way down.

Room accessibility

This picture shows the typical entry into a room where an event or meeting may take place.



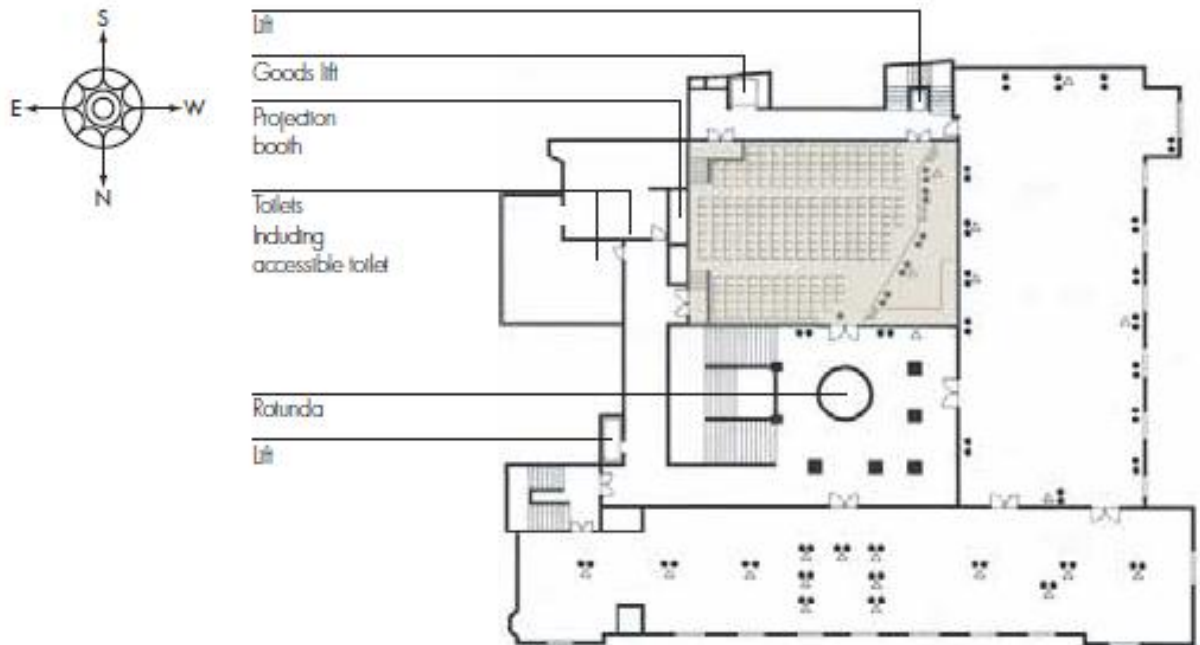
You will see the entrance is carpeted in the room with a level brass door strip. More information about each room can be found by following this link and over the following pages:

<http://www.onegreatgeorgestreet.com/rooms.aspx>

First floor rooms

1. [Telford Theatre](#) with a door width of 2 metres and a wheelchair user space immediately on left hand side of door.

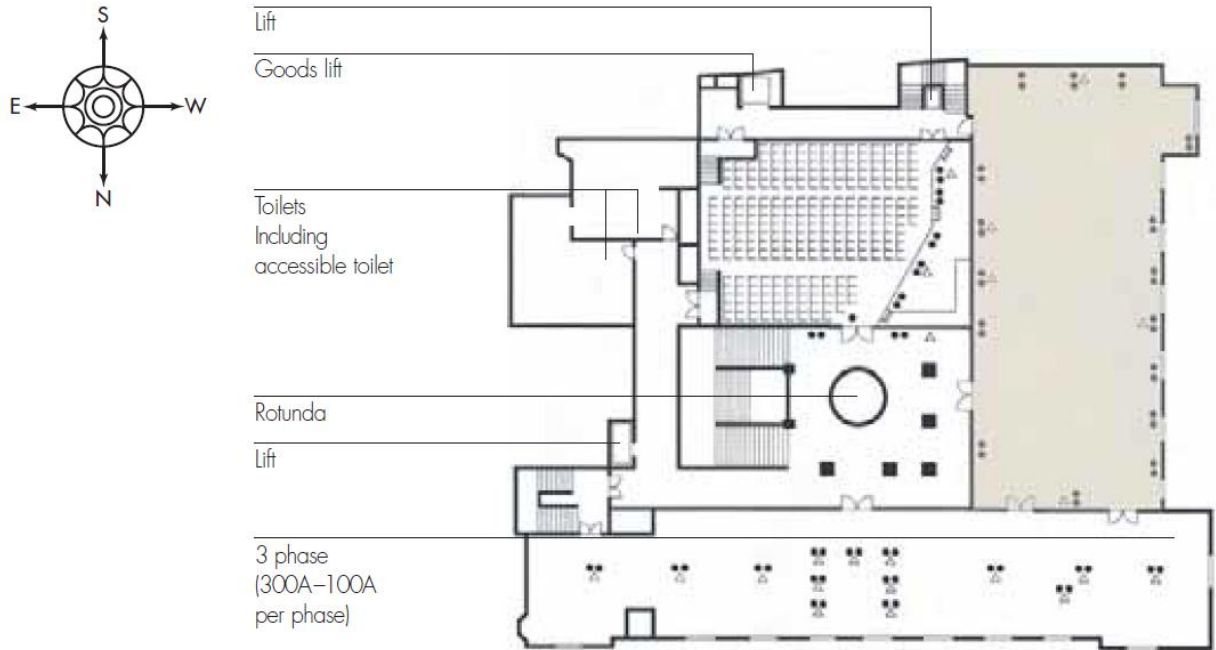
Telford Theatre
First Floor



2. [Great Hall](#) with door width of 2 metres.

Great Hall

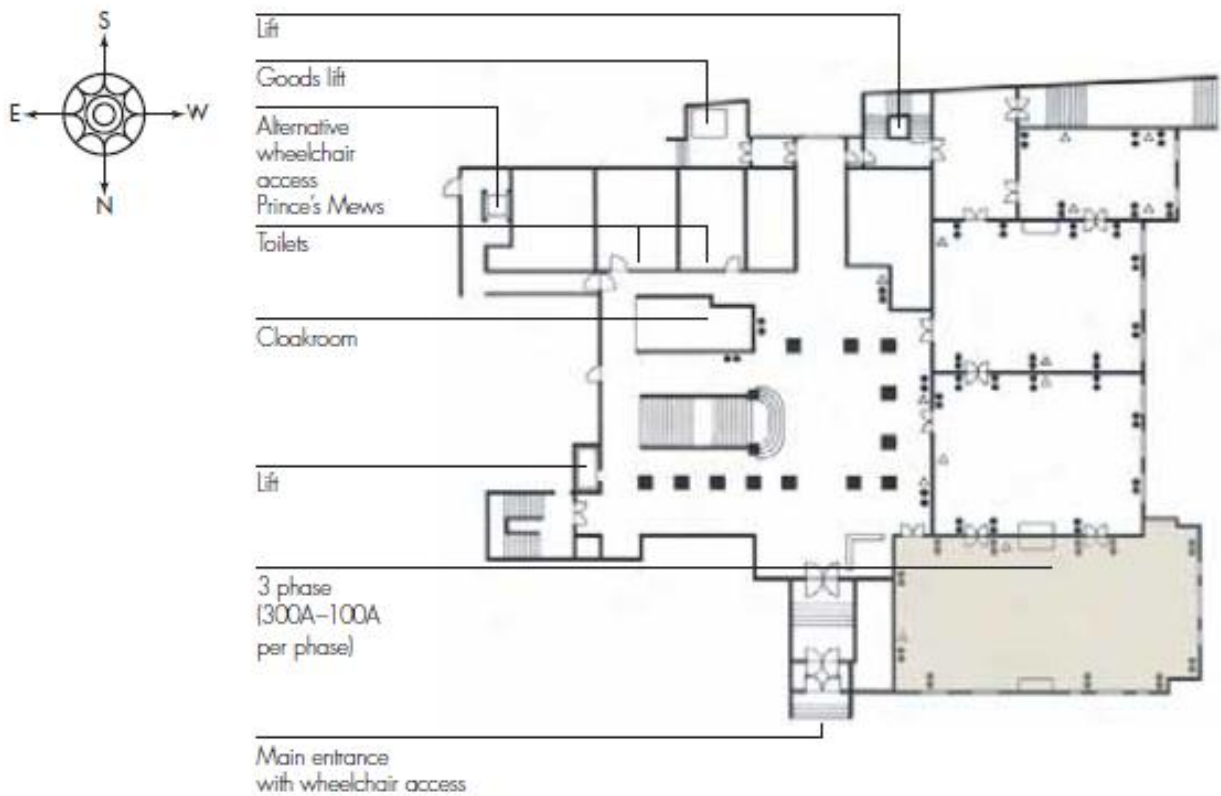
First Floor



Rooms on Ground Floor

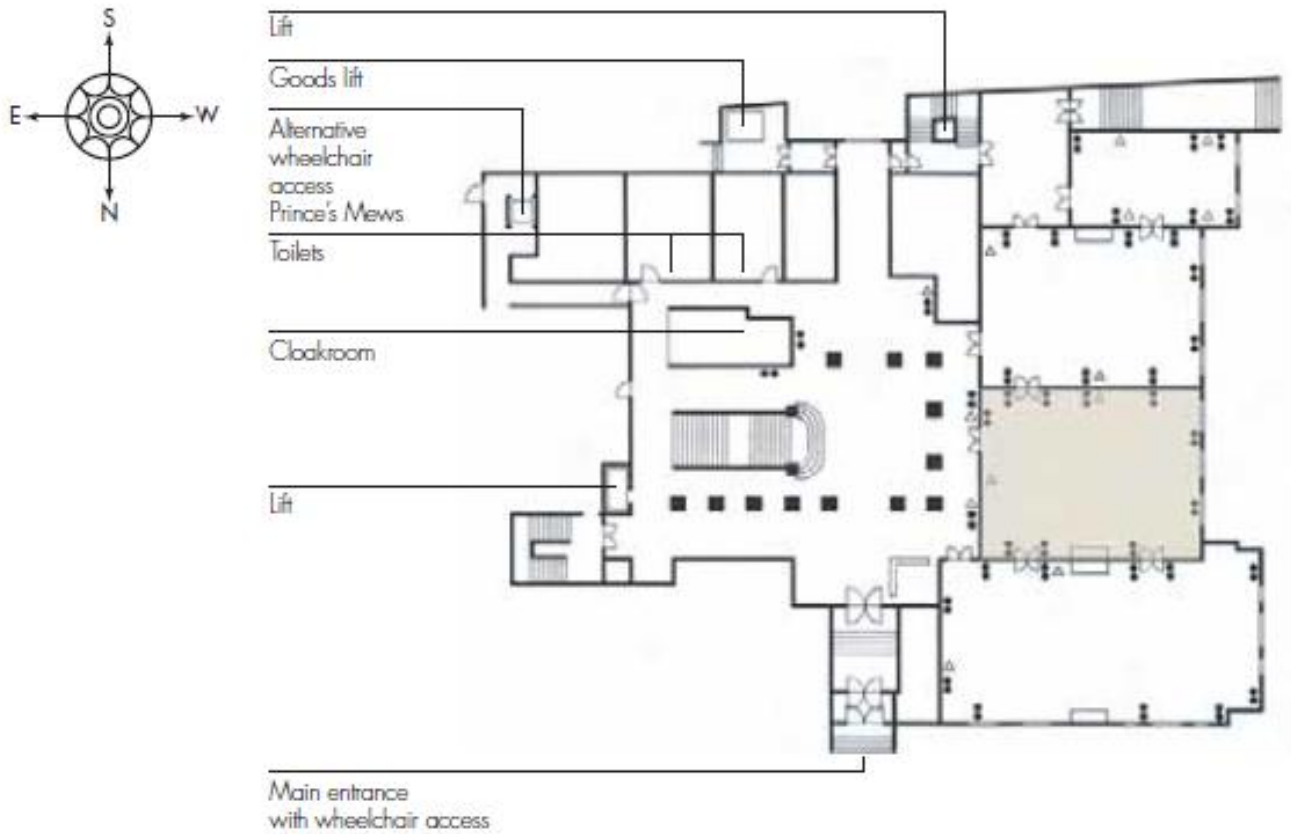
1. [Smeaton Room](#) with a door width of 1.5 metres.

Smeaton Room
Ground Floor



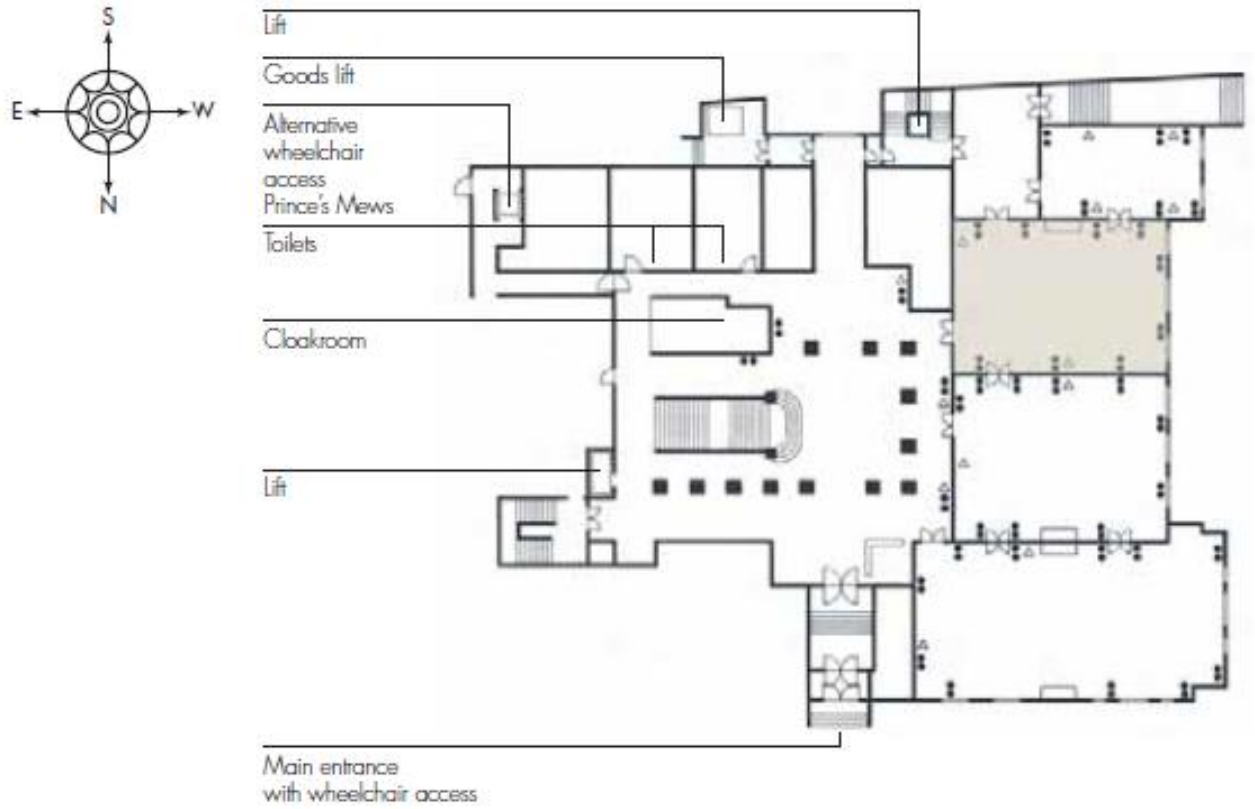
2. [Brunel Room](#) with a door width of 1.5 metres.

Brunel Room
Ground Floor



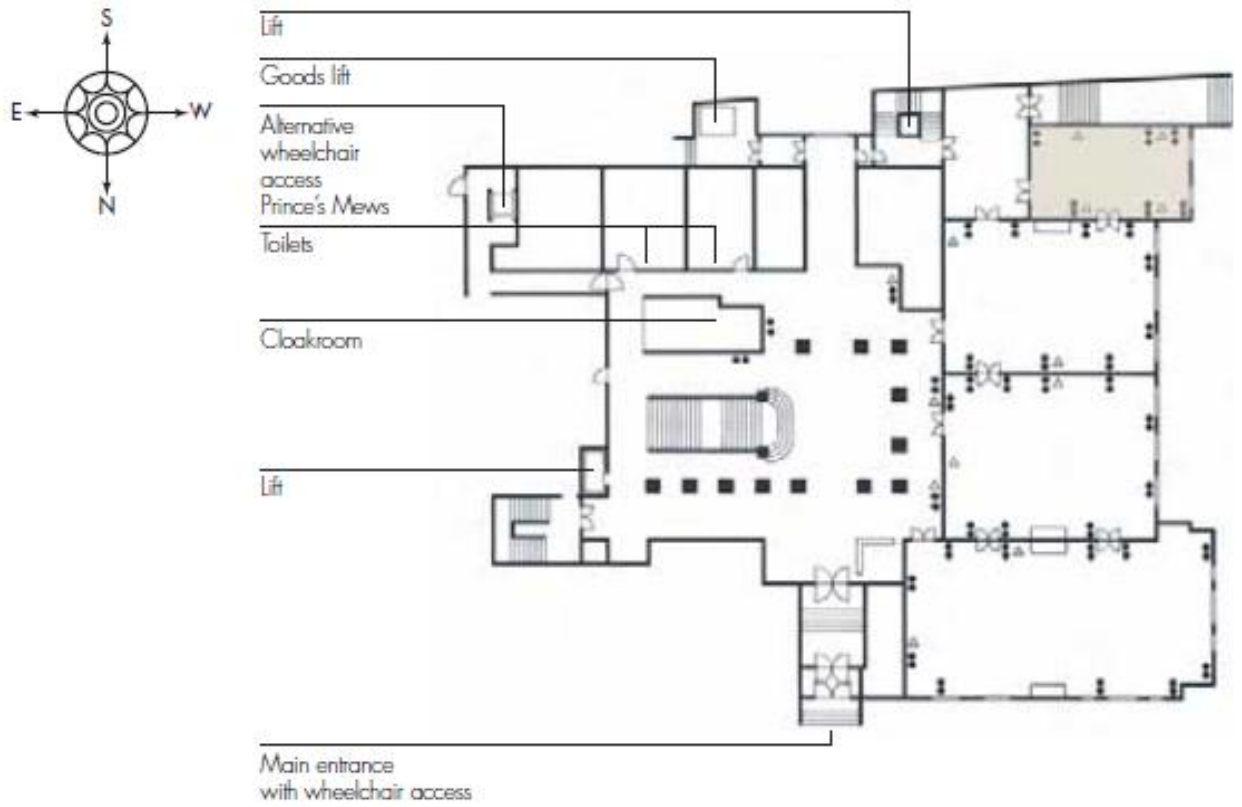
3. [Council Room](#) with a door width of 1.5 metres.

Council Room
Ground Floor



4. [Stephenson Room](#) with a door width of 1.5 metres.

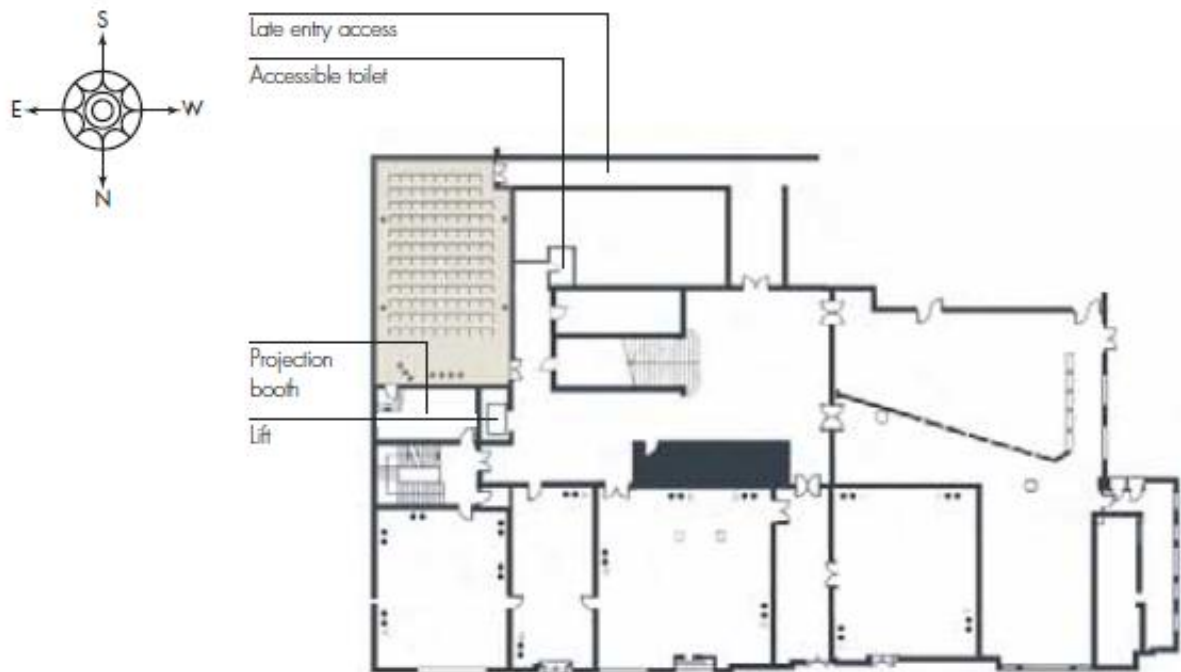
Stephenson Room
Ground Floor



Rooms on lower ground floor one

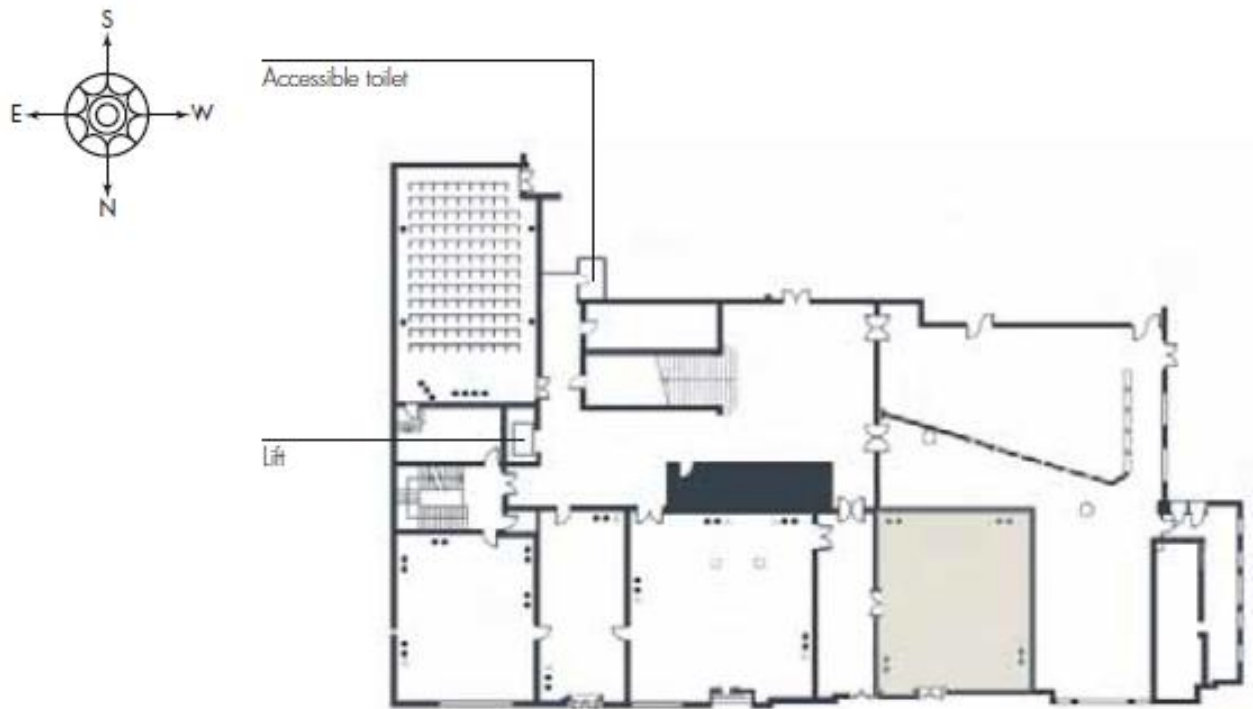
1. [Godfrey Mitchell Theatre](#) with a door width of 1.3 metres and level access on presentation and two seats removed on front row for a wheelchair user.

Godfrey Mitchell Theatre
Lower Ground Floor



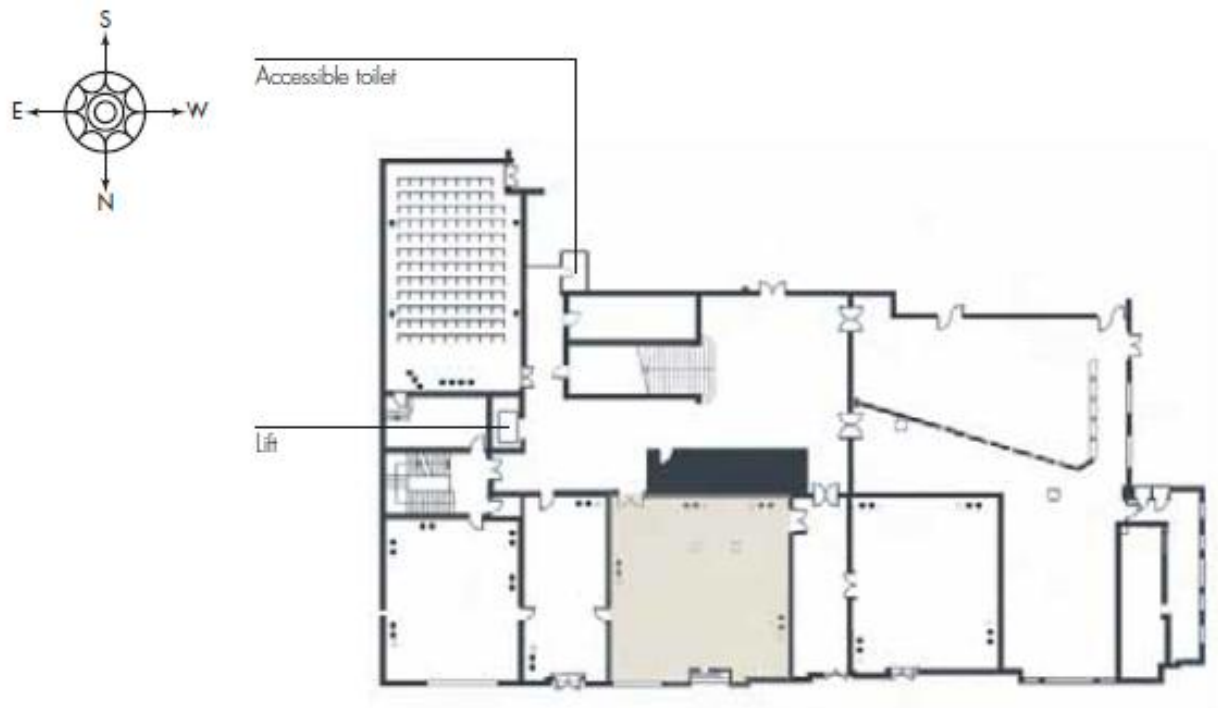
2. [Palmer Room](#) with a door width of 1.55 metres.

Palmer Room
Lower Ground Floor



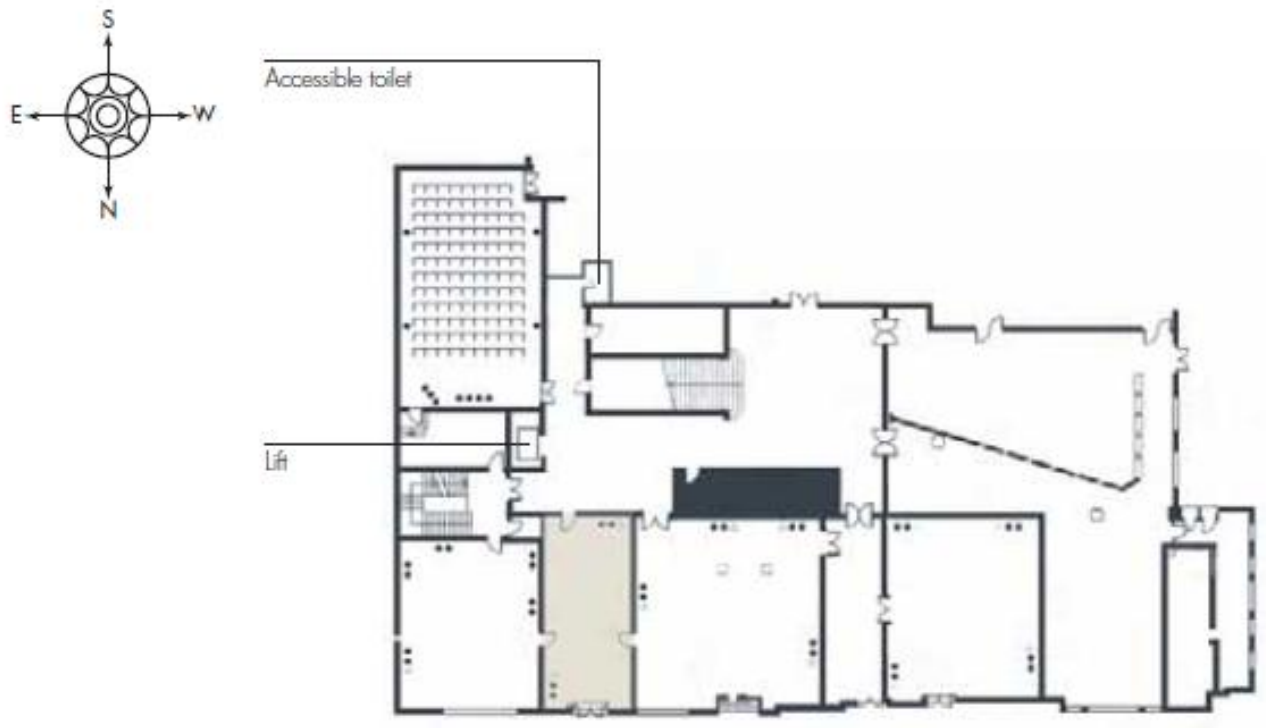
3. [Rennie Room](#) with a door width of 1.55 metres.

Rennie Room
Lower Ground Floor



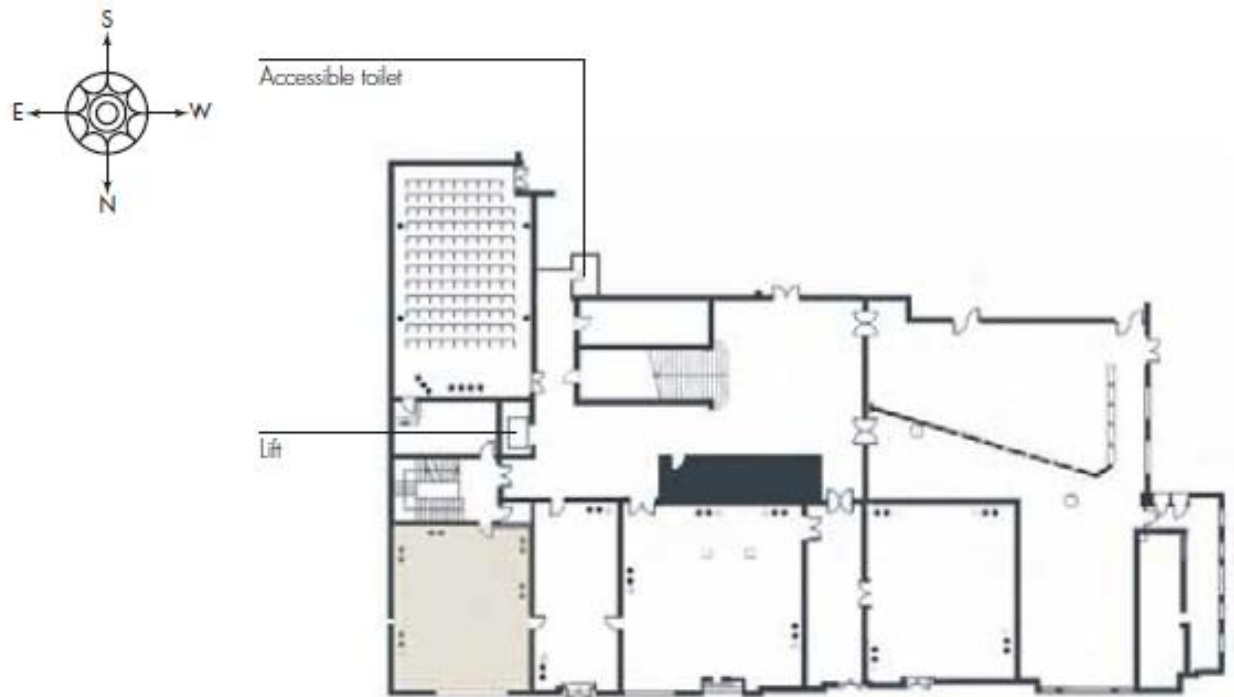
4. [Tredgold Room](#) with a door width of 1 metre.

Tredgold Room
Lower Ground Floor



5. [President's Dining Room](#) with a door width of 0.86 metre.

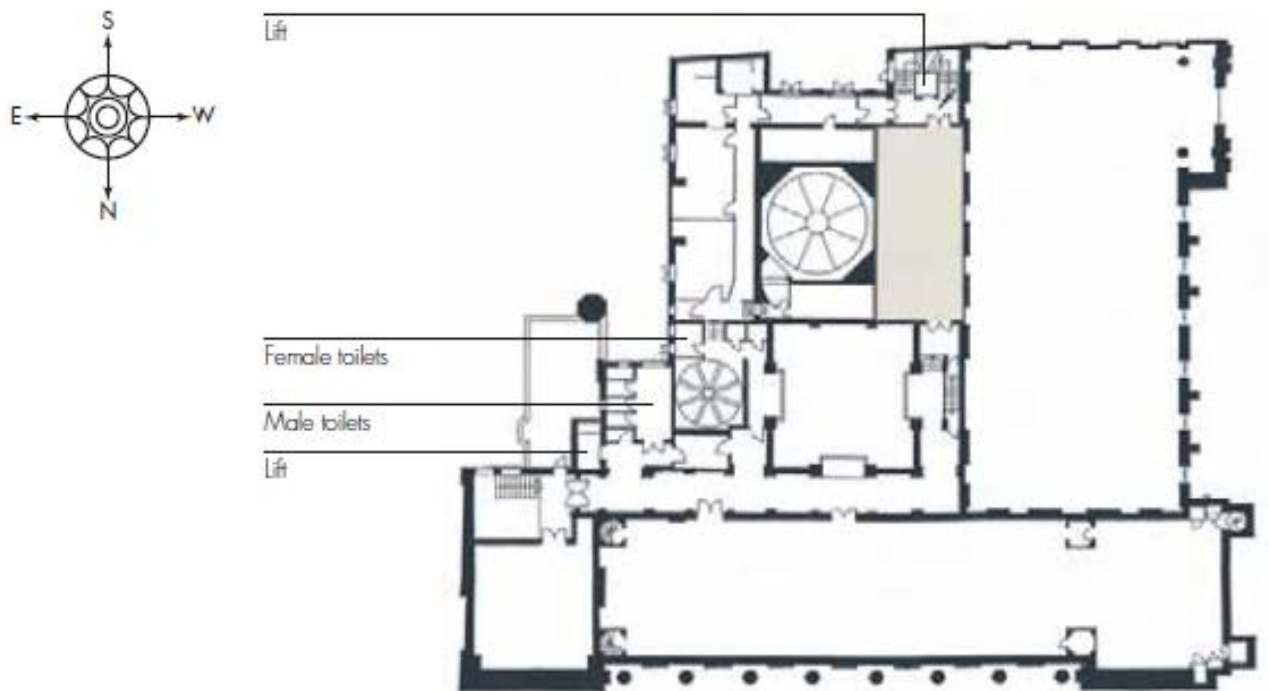
President's Dining Room
Lower Ground Floor



Room on second floor

1. [Bazalgette Room](#) with door width of 1.4 metres.

Bazalgette Room
Second Floor



Rooms on lower basement two

- Seven meeting rooms that are ideal for small meetings, they are all very similar and here is one of them. The door width is 0.8 of a metre and in the [Brassey Room](#) it is 1.8 metres.

Small Meeting Rooms
Lower Ground Floor Two

